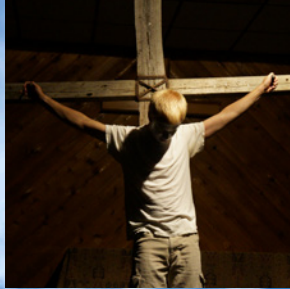




The **LORD'S** great reputation
REACHES beyond our borders.

Malachi 1:5



BEYOND

A CAMPAIGN TO EXPAND THE IMPACT OF INGHAM OKOBOJI



Ingham ⁺
Okoboji
Lutheran Bible Camps





**The mission of
Ingham Okoboji
Lutheran Bible
Camps is
“To know Jesus
Christ and to
make Christ
known to all.”**

For 90 years families and young people alike have been transformed and renewed by the ministries of Ingham Okoboji Lutheran Bible Camps. In fact, this ministry impacts approximately 12,000 people each year. Whether it be day camp in a rural community, a junior high “Recharge” in the fall, a couple’s retreat in the spring, youth camp, family and group retreats, music camp at Ingham or family camp at Okoboji, Christ is encountered, and lives are changed. Last summer alone...

- *A student gave up her year-long burden of guilt over a loss in her life*
- *A 50+ year old pastor was inspired to a renewed passion for Jesus and a child-like faith*
- *Staff and campers alike were encouraged by the witness of Neal, a junior counselor with cerebral palsy*
- *Families went home resolved and equipped to keep Christ at the center*
- *Young people each week renewed their faith in Christ, and some came to trust in God’s saving grace for the first time*

Beyond its ministry to families and young people, Ingham Okoboji has equipped thousands of young adult staff members for ministry and service in their communities and the world. Many have become pastors and leaders in the church. Still others have left their communities to bring the good news of Jesus Christ to the world. The cumulative impact of their ministry over the last 90 years is astounding.

Indeed, God has faithfully blessed the ministry of Ingham Okoboji and His power has been at work establishing and encouraging the faith lives of all who encounter this ministry.

Claiming God’s faithfulness, Ingham Okoboji believes God is opening doors to expand the impact of the ministry BEYOND its current borders. Together with ministry partners, we have been called and empowered to do even more to make Christ known to all.

BEYOND is a capital campaign designed to accomplish this goal by raising \$2M for program expansion, debt reduction and facility improvement.





PROGRAM LIMITATIONS...

THE CHALLENGE Many campers leave camp with a longing to continue their spiritual growth, but are met by an overwhelming chorus of other voices calling for their time, attention and hearts.

THE SOLUTION **Expand Programs Beyond the Camp Experience**

Provide year-round faith-fostering communication with campers to sustain faith and nurture spiritual life.

Year-round Devotions. Social Media. Interactive Website. Personal Contact from Staff.

Resourcing parents, pastors and youth workers to be more equipped in their important role of spiritual nurture.

Access to Bible Studies. Creative Skits. Theme Verse Song. Workshops and Training Events. Worship DVD's. Personal Spiritual Retreats.

THE CHALLENGE For many youth and families in our changing world, faith and Christianity seem no longer relevant. Mountain-top experiences like camp are considered non-existent. Unless new ways are found to invite and attract people to camp, they may never experience Christian community and the life-changing love of Jesus.

THE SOLUTION **Expand Programs Beyond Current Campers**

Dedicate funds to empower youth and families who can't afford to attend camp

Remove barriers to attract new campers such as underprivileged youth, the unchurched, various ethnic groups, and military families

Funding. Networking to Reach New Groups. Accessibility.

Invest in recreational enhancements that will attract new campers

Boats. Water Trampoline. Slide. Camping Equipment. Challenge Course. Bikes. Gymnasium Enhancements.

THE BOTTOM LINE Creating expanded programs and new ministry initiatives will use 20% of the total funds raised through the BEYOND campaign.



BEYOND

expanding programs | improving facilities | reducing debt

FACILITY LIMITATIONS...

THE CHALLENGE The chapel at Ingham has been the cornerstone of its ministry for 62 years. We praise God for the thousands of lives who have been blessed here. Unfortunately, retiring the old Chapel has become a necessity. Having been nearly condemned for use in the 1980s, the foundation and rafters were subsequently patched which thankfully extended the life of the Chapel. Now almost 30 years later, the foundation's shallow footings have caused the block walls to separate; the floor is full of dangerous cracks, and there are too many holes in the wood siding to repair. These problems have hindered the effectiveness of our ministry and discouraged some from attending.

THE SOLUTION **Build a New Chapel at Ingham**

This is the most cost-effective solution and will offer a welcoming air conditioned environment for worship and programming in the summer while bringing warmth to the fellowship for the retreat season. With improved building accessibility all will be welcomed. Here, young and old will experience the love of God in Christian community and hear the gospel, with hearts open to Jesus Christ.

THE BOTTOM LINE The Chapel at Ingham will use 15% of the total funds raised through the BEYOND campaign.



New Chapel Estimated Cost: \$300,000



THE CHALLENGE

Housing at Okoboji is currently inadequate. Each year there are waiting lists for several weeks, either because the camp is full, or the right kind of housing is not available.

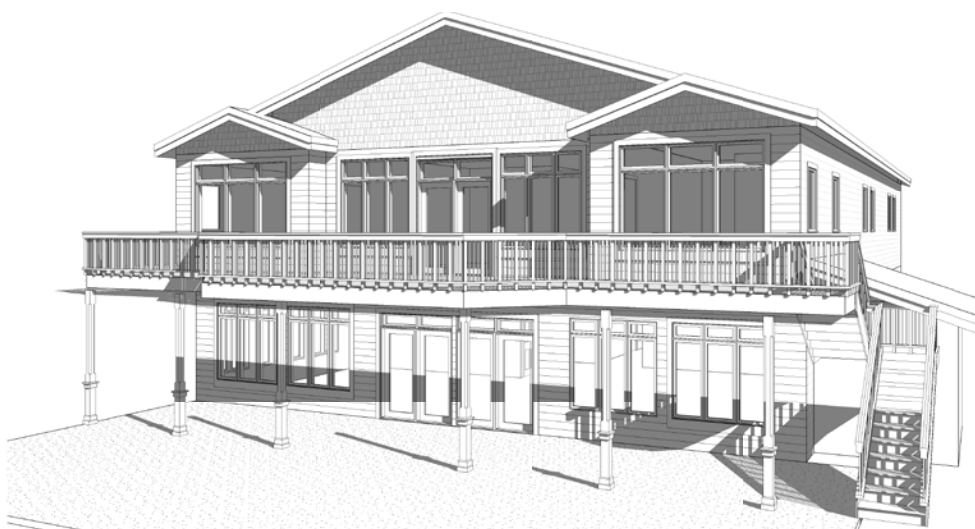
THE SOLUTION

Build a Beach House Retreat Center to Replace the Existing Beach House

This housing unit would increase our adult and family participation and provide more ministry opportunities throughout the calendar year. The retreat center would have the feel of a cabin with private bedroom/bath for families and a shared living area with a kitchen. This project would also be the next step to revitalize our beach area adjacent to the Circle of HOPE Amphitheater and significantly increase the lakefront space available to all for fellowship and recreation. The funds raised for this project during the campaign would cover a significant portion of the cost.

THE BOTTOM LINE

15% of the total funds raised through the BEYOND campaign will be allocated for the Beach House Retreat Center project.



Beach House Retreat Center Estimated Cost: \$500,000



FINANCIAL LIMITATIONS...

THE CHALLENGE Ingham Okoboji currently carries liabilities of \$1.2M. Of our \$1.25M annual budget, \$124,000 (almost 10%) is allocated for debt service in the current year. Over the past 7 years, the camps have operated in the black and made regular scheduled progress on the debt. Yet even with reduced interest rates, if we continue servicing our debt in this way over the next 5 years, we will pay \$193,000 in interest and only lower our principle by \$304,000. While debt is often a reality of thriving ministries, we believe our current debt inhibits the full potential of fulfilling our mission.

THE SOLUTION Reducing the debt by \$1M.

This aggressive plan is not only wise stewardship of our financial resources, it frees up between \$80,000 and \$100,000– each year – to expand our ministry impact. The savings will provide ministry resources for churches and families, opportunities for more campers to come, and necessary staff to carry out new ministry efforts well beyond the campaign.

This is an exciting time in the history of Ingham Okoboji Lutheran Bible Camps. With God's blessings, and through the generous support of God's people, we will be able to live out the call from Malachi 1:5. God's work and reputation will reach far beyond the camp's current borders, impacting the world, so that many more will *know Jesus Christ and make Christ known to all!*

THE BOTTOM LINE Debt reduction will use 50% of the total funds raised through the BEYOND campaign.



Q & A



The goal of Ingham Okoboji's BEYOND campaign is \$2M. Funds raised will be used in the following ways:

Debt reduction: \$1M

Expanded Programs: \$400,000

Facility improvements: \$600,000

- *Chapel at Ingham: \$300,000*
- *Beach House Retreat Center: \$300,000 (total project cost \$500,000)*

Which ministry initiatives are the priority?

Each ministry area is important, which is the reason for dividing the campaign by percentage into areas of initiative.

We feel called, and have heard the voices of our partners echoing the call, to expand Ingham Okoboji's impact beyond the camp experience and beyond current campers.

Debt reduction really will have a substantial impact on freedom to do ministry in the future.

The two building projects outlined will open new doors for ministry. Of these two, we plan to build the Ingham Chapel first, since the need is more immediate.

How will we service the remaining debt?

Though this successful campaign will eliminate most debt, any remaining at the end will be termed out and paid off with a regular payment schedule until eliminated.

What happens if the \$2M goal is not met?

Funding will be applied on a percentage basis as it comes in. If the goal is not met, substantial ministry progress will be made in each category on that same percentage basis.

Will a construction loan be necessary?

No construction loan is necessary, as no building will begin until that building is fully funded for functional use.

When will the building projects start?

A building will begin when the project or reasonable stage is fully funded.





*This is a place we grew
up attending, and now
we bring our children
here to grow in faith.*

– family camper

*I found Christ again and
reaffirmed my faith in Him*

–youth camper



*Wow! Call me a fan! Rylie did not have
enough wonderful things to say! She talked
very animatedly the four hours it took us
to get home! Thank you for showing her
such a wonderful time praising God!*

– camper parent

*I love camp because it helps so
much to solidify our family and the
challenge to go "all in" for Jesus.*

– family camper



Ingham Lake Bible Camp
2258 450th Avenue
Wallingford, IA 51365

Okoboji Lutheran Bible Camp
1203 Inwan St.
Milford, IA 51351